



DEVELOPMENT LAND FOR SALE

150 Highway & Prospect Avenue (SEQ)

14701 Prospect Avenue, Kansas City, Missouri



58.55 ACRES | CALL FOR PRICING

DEMOGRAPHICS

	1 mile	3 miles	5 miles
Estimated Population	18	26,640	112,282
Avg. Household Income	\$17,825	\$95,451	\$148,087

- Great manufacturing or distribution location
- Convenient access to 150 Highway, Interstate 49, and Interstate 435
- KC Southern rail line along east property line
- Adjacent to Centerpoint Intermodal Center
- 310,000 SF Masters Transportation Headquarters office, manufacturing, and sales facility under construction on NEQ
- Corner property available

[CLICK HERE TO VIEW MORE LISTING INFORMATION](#)

For More Information Contact:

Co-Brokers

MITCH DICARLO | 816.412.7320 | mjdicarlo@blockandco.com

Block & Company, Inc. Realtors

MARK DICARLO | 913.626.8899 | mark@mdicarlo.com

M. DiCarlo, LLC | Real Estate Investments



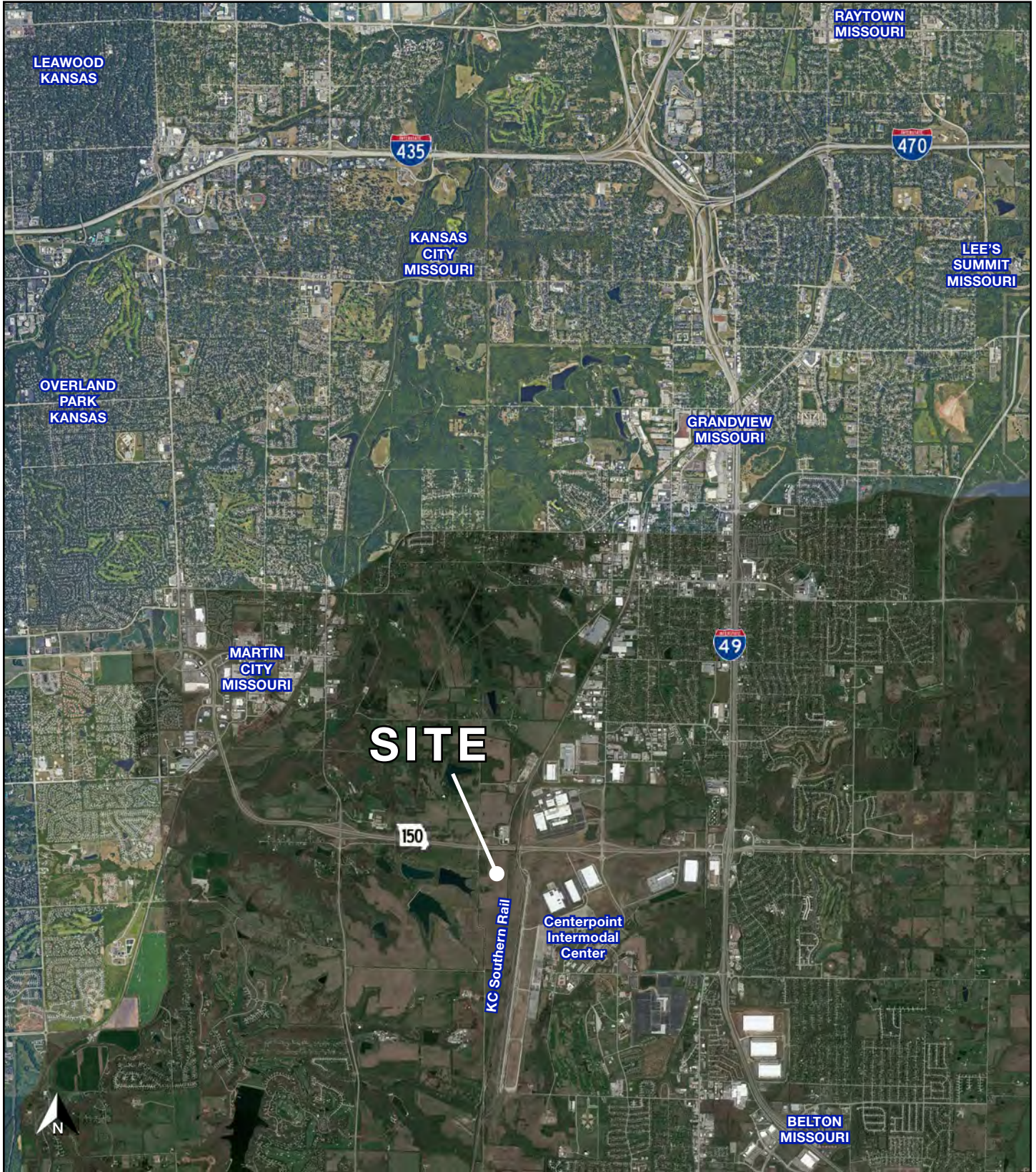


DEVELOPMENT LAND FOR SALE

150 Highway & Prospect Avenue (SEQ)

14701 Prospect Avenue, Kansas City, Missouri

AERIAL

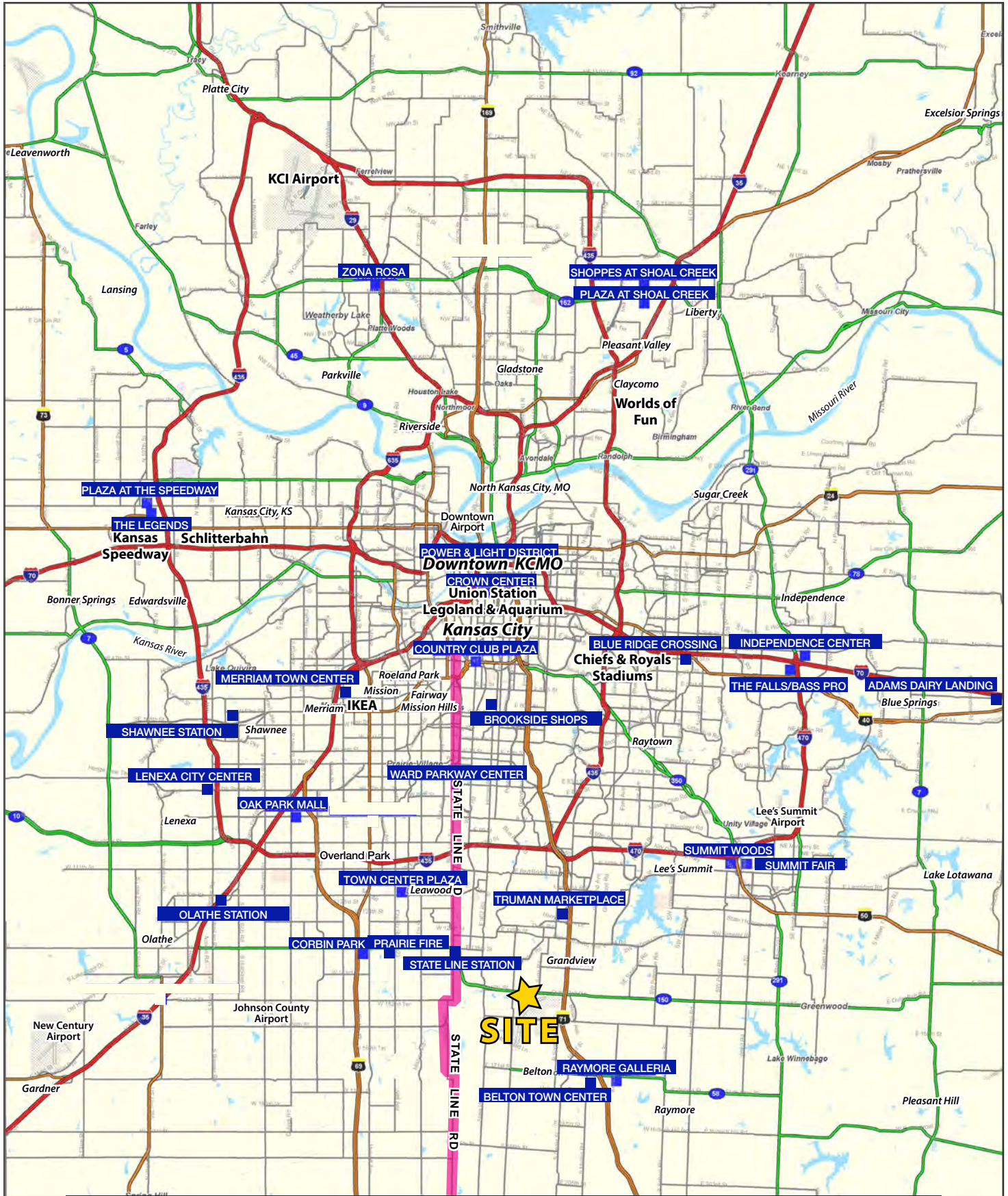




DEVELOPMENT LAND FOR SALE

150 Highway & Prospect Avenue (SEQ)

14701 Prospect Avenue, Kansas City, Missouri

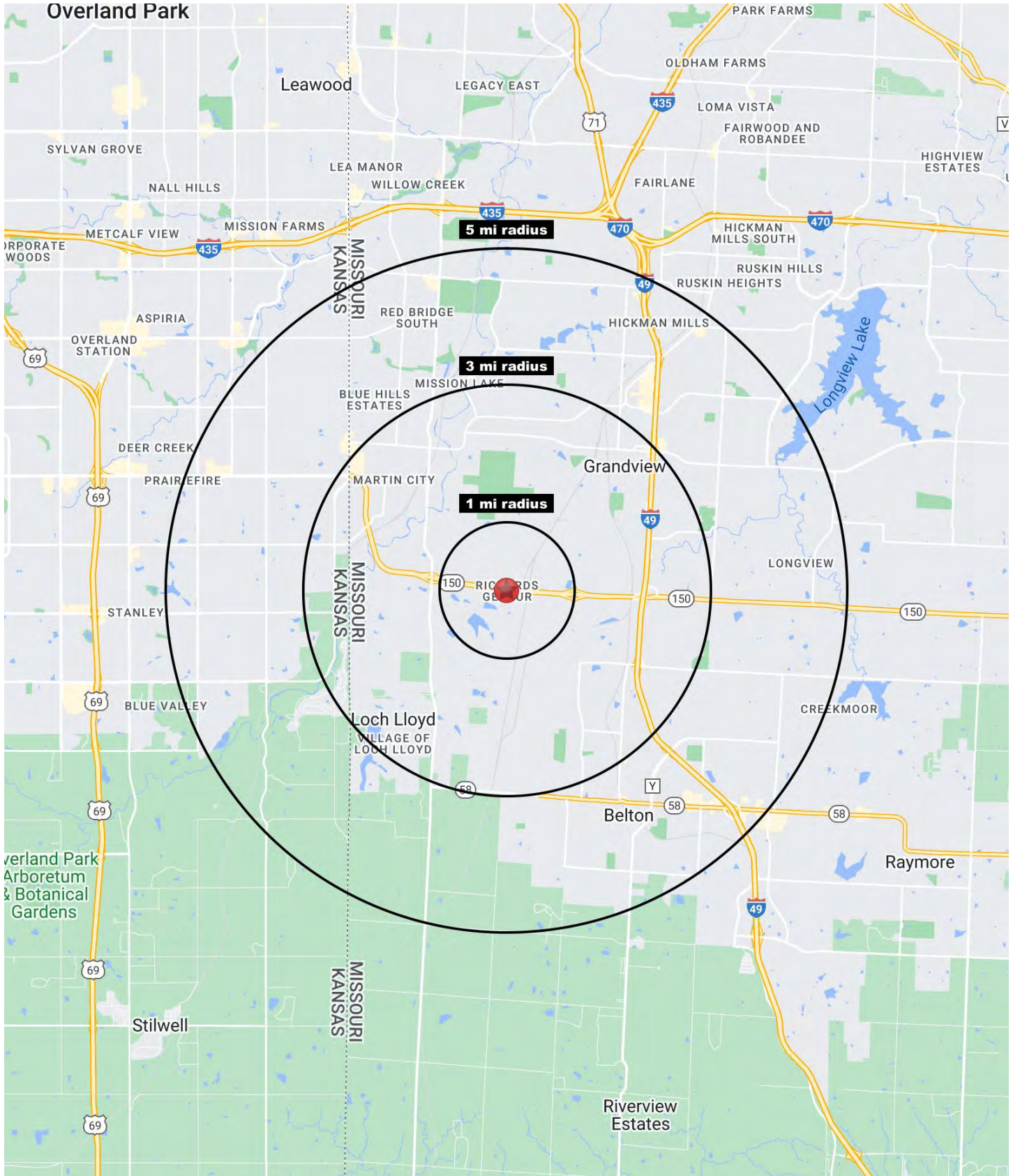




DEVELOPMENT LAND FOR SALE

150 Highway & Prospect Avenue (SEQ)

14701 Prospect Avenue, Kansas City, Missouri





DEVELOPMENT LAND FOR SALE

150 Highway & Prospect Avenue (SEQ)

14701 Prospect Avenue, Kansas City, Missouri

150 Highway & Prospect Avenue Kansas City, MO 64146	1 mi radius	3 mi radius	5 mi radius
Population			
2023 Estimated Population	18	26,640	112,282
2028 Projected Population	20	26,572	113,338
2020 Census Population	31	26,054	111,603
2010 Census Population	30	23,985	103,986
Projected Annual Growth 2023 to 2028	2.4%	-	0.2%
Historical Annual Growth 2010 to 2023	-3.1%	0.9%	0.6%
2023 Median Age	23.3	37.0	39.8
Households			
2023 Estimated Households	6	10,702	43,397
2028 Projected Households	7	10,554	43,222
2020 Census Households	11	10,517	43,028
2010 Census Households	11	9,292	39,567
Projected Annual Growth 2023 to 2028	2.1%	-0.3%	-
Historical Annual Growth 2010 to 2023	-3.1%	1.2%	0.7%
Race and Ethnicity			
2023 Estimated White	31.9%	64.4%	70.9%
2023 Estimated Black or African American	60.4%	20.4%	16.6%
2023 Estimated Asian or Pacific Islander	0.4%	2.4%	4.0%
2023 Estimated American Indian or Native Alaskan	0.3%	0.5%	0.3%
2023 Estimated Other Races	6.9%	12.2%	8.2%
2023 Estimated Hispanic	3.7%	11.7%	7.7%
Income			
2023 Estimated Average Household Income	\$17,825	\$95,451	\$148,087
2023 Estimated Median Household Income	\$8,901	\$69,434	\$104,306
2023 Estimated Per Capita Income	\$6,252	\$38,398	\$57,304
Education (Age 25+)			
2023 Estimated Elementary (Grade Level 0 to 8)	-	1.4%	1.5%
2023 Estimated Some High School (Grade Level 9 to 11)	16.6%	4.9%	3.3%
2023 Estimated High School Graduate	39.4%	29.7%	21.9%
2023 Estimated Some College	8.8%	23.1%	20.4%
2023 Estimated Associates Degree Only	1.9%	8.9%	7.2%
2023 Estimated Bachelors Degree Only	15.0%	20.7%	26.6%
2023 Estimated Graduate Degree	18.4%	11.3%	19.1%
Business			
2023 Estimated Total Businesses	30	1,075	3,573
2023 Estimated Total Employees	2,687	18,511	41,009
2023 Estimated Employee Population per Business	89.5	17.2	11.5
2023 Estimated Residential Population per Business	-	24.8	31.4

©2024, Sites USA, Chandler, Arizona, 480-491-1112 Demographic Source: Applied Geographic Solutions 11/2023, TIGER Geography - RS1

